

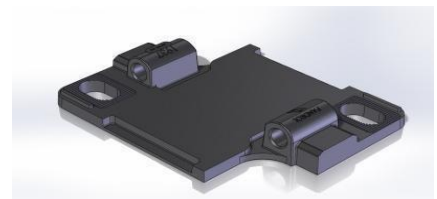


## BASEPLATES

The basic functionality of a baseplate is to increase the bearing area and hold the rail to the correct gauge. Coach screws are used to fasten the baseplates to the sleeper. The cast iron baseplate seat is either flat or set at a 1:20 cant (tilting the rail inwards from the vertical).

### Types:

- 1937 Tunnel Chair
- Canted baseplates
- Flat baseplates



### Sleeper Applications:

- Concrete
- Wooden
- Steel



### Rail Range:

- 15 – 60 Kg/m Rail
- Baseplates can be custom-made to suit customer requirements

