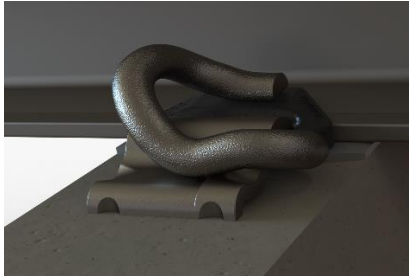


# Anti Vandal “e-clip”



The Pandrol Anti-Vandal assembly uses the inherent design of the e-clip to prevent the malicious removal of rail fastening clip from track installations. The Anti-Vandal e-clip installs like any other e-clip, but cannot be removed by normal means. The removal requires a modified Pandrol Pan-puller to relieve the toe and heel of the clip, for the clip to be removed.

## Technical Features

<p><b>Ready to retrofit</b> Pandrol Anti-Vandal e-clip can be installed on existing lines with no special tools. The system uses existing hardware to function.</p>	
<p><b>Highly durable</b> The Pandrol Anti-Vandal e-clip has the same service life as standard Pandrol e-clip.</p>	<p><b>Applications</b> The Pandrol Anti-Vandal e-clip can be used on all lines and applications. Passenger, Freight and Heavy Haul.</p>
<p><b>Efficiency Gains</b> Since the Anti-Vandal clip use standard system components a high level of efficiency gains can be made during installation since no special tools or processes are required.</p>	

## Components

1. Anti-Vandal e-clip
2. Standard GPI (Gauge Post Insulator)
3. Standard Rail pad

Special Tools

**Anti-Vandal Pan-puller**

