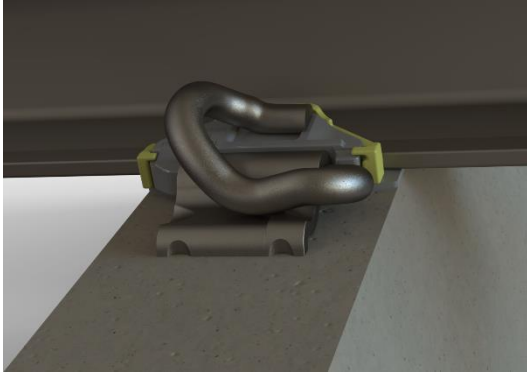


Anti-Theft “e-clip” System



The Pandrol Anti-Theft assembly uses the inherent design of the e-clip as well as a Special designed GPI, to prevent the malicious removal of rail fastening clip from track installations. The Anti-Theft System installs like any other e-clip system but cannot be removed by normal means. The removal requires a modified Pandrol Pan-puller to relieve the toe and heel of the clip, for the clip to be removed. The special design of the GPI allows for the system to maintain electrical insulation.

Technical Features

<p>Ready to retrofit Pandrol Anti-Theft System can be installed on existing lines with no special tools. The system uses existing hardware and a special GPI to function.</p>	<p>Applications The Pandrol Anti-Theft e-clip can be used on all lines and applications. Passenger, Freight and Heavy Haul.</p>
<p>Highly durable The Pandrol Anti-Theft System has the same service life as standard Pandrol e-clip installations.</p>	<p>Integrity The GPI maintains integrity of the system as well as the electrical insulation where required. The special Cast insert make removal of the e-clip without the correct tools very difficult.</p>
<p>Efficiency Gains Since the Anti-Theft System uses standard system components, a high level of efficiency gains can be made during installation since no special tools or processes are required.</p>	<p>Maintenance The Anti-Theft System can be maintained using standard tools and equipment.</p>

Components

1. Anti-Vandal e-clip
2. Anti-Theft GPI with Cast Insert (Gauge Post Insulator)
3. Standard Rail pad

Special Tools

Anti-Theft Pan-puller

